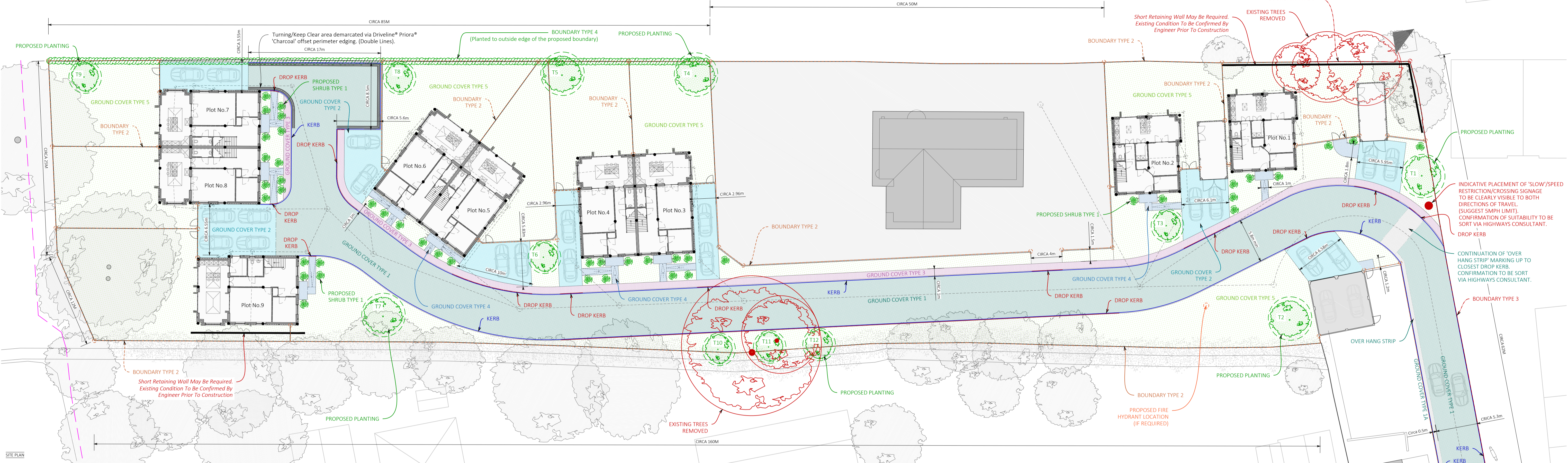


Please Note:

- Do not scale directly from these drawings.
- All dimensions should be checked on site by the contractor prior to the commencement of any works.
- Any discrepancy should be reported to CW immediately.
- Contractors should carry out their own assessment before commencing any works.
- All works are to be carried out in accordance with relevant Approved Documents & British/Scottish Standard where applicable.
- CW does not take any responsibility for information provided by third parties.



GROUND COVER TYPES

Please see engineers drawings for additional specification.

TYPE 1 - ROAD

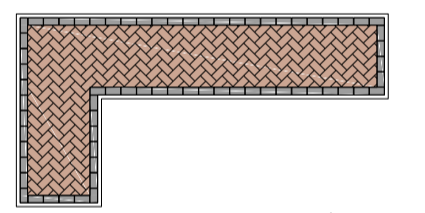
- 'Marshals' Permeable Block Paving (or similar).
- 90° Herringbone - LP-0010.
- Driveline® 'Charcoal' Edging.
- Edging stone bedded in GEN1 concrete.

TYPE 3 - FOOTPATH

- 'Marshals' Permeable Block Paving (or similar).
- Stretcher Bond - LP-0008.
- Driveline® 'Priaora' 'Brindle' to field.
- Driveline® 'Priaora' 'Charcoal' Edging.
- Edging stone bedded in GEN1 concrete.

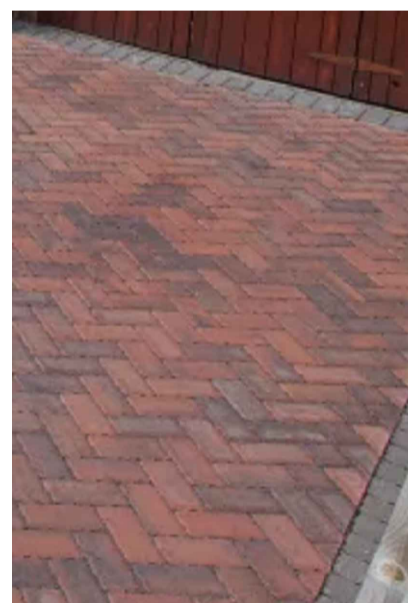
TYPE 4 - PRIVATE PATH

- 'Marshals' Permeable Block Paving (or similar).
- 90° Herringbone - LP-0010.
- Driveline® 'Priaora' 'Brindle' to field.
- Driveline® 'Channel' 'Charcoal' Edging.
- Edging stone bedded in GEN1 concrete.
- Min 900mm in width.



TYPE 5 - GRASS

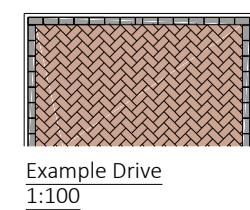
- General Purpose Lawn.
- 100mm topsoil.



- 'Marshals' Permeable Block Paving (or similar).
- Driveline® 'Priaora' 'Brindle' to field.
- Driveline® 'Priaora' 'Charcoal' Edging.
- Edging stone bedded in GEN1 concrete.

TYPE 2 - DRIVE

- 'Marshals' Permeable Block Paving (or similar).
- 90° Herringbone - LP-0010.
- Driveline® 'Priaora' 'Brindle' to field.
- Driveline® 'Priaora' 'Charcoal' Edging.
- Driveline® 'Channel' 'Charcoal'.
- Edging stone bedded in GEN1 concrete.



KERBS

Please see engineers drawings for additional specification.

Please see 'Ground Cover' specification for additional clarification.

ROAD KERB - STRAIGHT

- British Standard Concrete kerb
- Circa 225x125mm

ROAD KERB - DROP

- British Standard Concrete kerb
- Circa 225x125mm



LEVELS

Please see engineers drawings for clarification in regard to levels etc.

DRAINAGE & UTILITY

Please see engineers drawings for clarification and specification.

BOUNDARY TREATMENTS

- TYPE 1**
- Close board timber fence.
 - Circa 0.8m+ kick board in height
 - 100x100mm treated posts @ Circa 2.4m centres.
 - Treated Arris rail.
 - Circa 150mm treated timber kick board.
- TYPE 2**
- Close board timber fence in accordance with the supplied Noise Impact Assessment.
 - Circa 2m+ kick board in height
 - 100x100mm treated posts @ Circa 2.4m centres.
 - Treated Arris rail.
 - Circa 150mm treated timber kick board.
- TYPE 3**
- Close board timber fence in accordance with the supplied Noise Impact Assessment.
 - Circa 4m+ kick board in height
 - 100x100mm treated posts @ Circa 1.8m centres.
 - Treated Arris rail.
 - Circa 150mm treated timber kick board.

TYPE 4

- Mixed Native Hedge
- 30% Blackthorn
 - 30% Hawthorn
 - 10% Field Maple
 - 10% Hazel
 - 10% Beech
 - 10% Hornbeam



PROPOSED SOFT LANDSCAPE

Additional Arboricultural specification/detail to follow.

All new plantings only to take place when safe to do so, and to be in line with the guidance/advice set out within the Arboricultural report.

TREE TYPE 1

- Location: T2 & T7

TREE TYPE 2

- Location: Remainder

TREE TYPE 3

- Location: T4 & T5

SHRUB TYPE 1

- Ligustrum Sinense.
- Circa 0.5m in height when planted.



EXISTING TREES

Additional Arboricultural specification/detail to follow.

No above ground works shall take place until the existing trees on the site, agreed with the Local Planning Authority for inclusion in the scheme of landscaping, have been protected by the erection of temporary protective fences.

Protective fences shall be retained throughout the duration of building and engineering works in the vicinity of the trees to be protected. Any trees dying or becoming severely damaged as a result of any failure to comply with these requirements shall be replaced with trees of appropriate size and species during the first planting season, or in accordance with such other arrangement as may be agreed in writing with the Local Planning Authority.

PROTECTION AREAS AND BARRIERS

Please see agricultural report for clarification.

REVISIONS

- A - Initial proposal - 24/06/2020
- B - Revised proposal - 29/06/2020
- C - Additional planting adjacent plot 3 - 29/06/2020
- D - Boundary treatment amends - 07/08/2020
- E - Turning arrangement amends - 07/08/2020
- F - Minor SW boundary location amends - 13/08/2020
- G - Minor amends and addition clarification - 21/08/2020
- H - Minor relocation of plot No.7 shrubs 24/09/2020

PROJECT DETAILS

Hunters Moon
Colchester Road
Wix
CO11 3BE
01787 221 486
Studio@clockworktime.com
www.clockworktime.com

Project Details: Hunters Moon Colchester Road Wix CO11 3BE
Drawing No: 958-3-SITE/52/03/G
Drawing Title: Landscape Arrangement
Scale: 1:250 @ISO A1
Date: 24/09/2020
Checked: SS

CLOCKWORKTIME

36 Colford Hill
White Colne
Colchester
CO6 2PQ
01787 221 486
Studio@clockworktime.com
www.clockworktime.com

Project Details: Hunters Moon Colchester Road Wix CO11 3BE
Drawing No: 958-3-SITE/52/03/G
Drawing Title: Landscape Arrangement
Scale: 1:250 @ISO A1
Date: 24/09/2020
Checked: SS